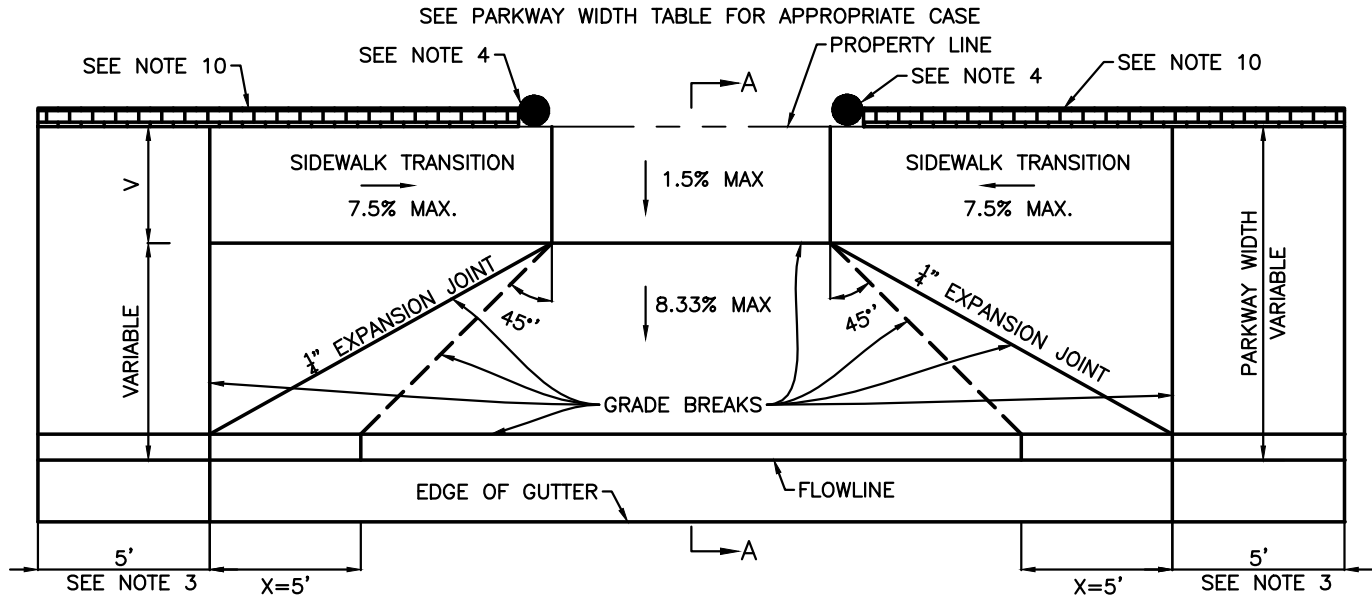
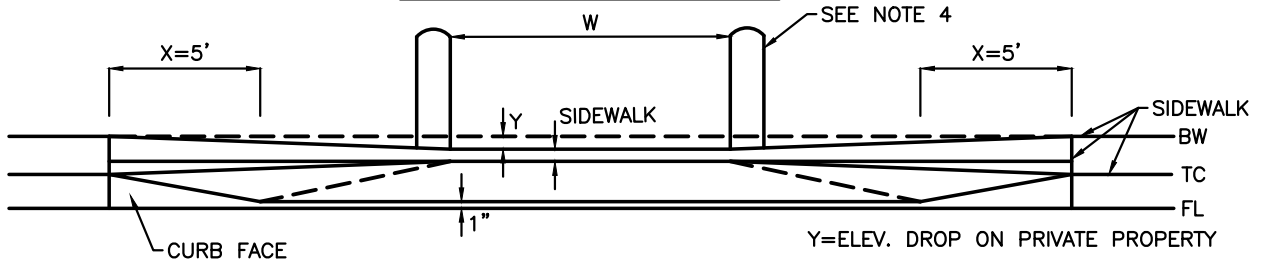


### CASE 1 - PLAN VIEW



### CASE 1 - ELEVATION



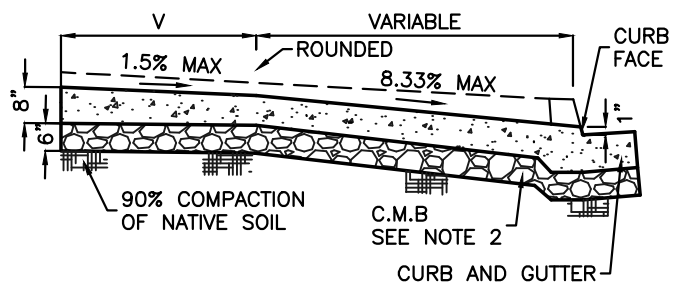
NOT TO SCALE

PARKWAY WIDTH TABLE

PARKWAY WIDTH	Y			
	6" CURB	8" CURB	10" CURB	
LESS THAN 8'	REFER TO CASE 2			
V=4'	8'	2.2"	4.2"	6.2"
	9'	1.4"	3.4"	5.4"
	10'	0.7"	2.7"	4.7"
	11'	0.0	1.9"	3.9"
	12'	0.0	1.2"	3.2"

\* REFER TO CASE 2

CASE 1 - SECTION AA



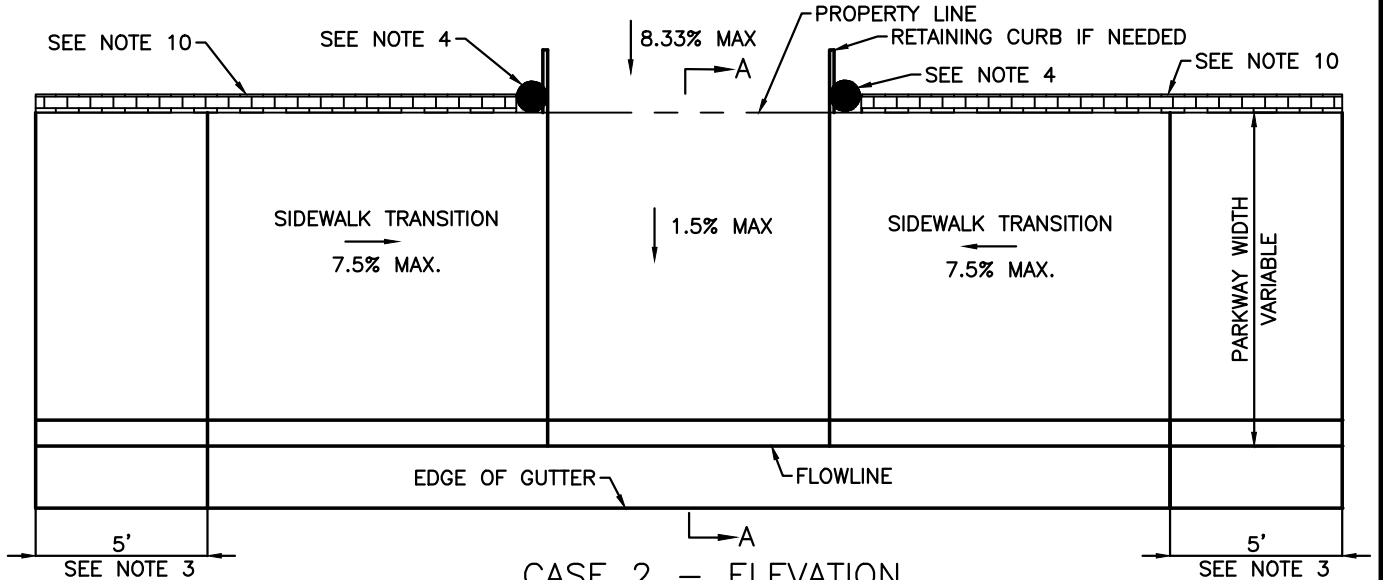
REVISIONS		
DATE	DESCRIPTION	INITIALS
8/15	MODIFIED CASE #1 & CASE#2 DRIVEWAY	BM
2/16	MODIFIED CASE #1 & CASE#2 DRIVEWAY	FS
7/18	UPDATED	MB

**STANDARD DRIVEWAY**  
CITY OF VERNON, PUBLIC WORKS DEPARTMENT  
JULY 2018

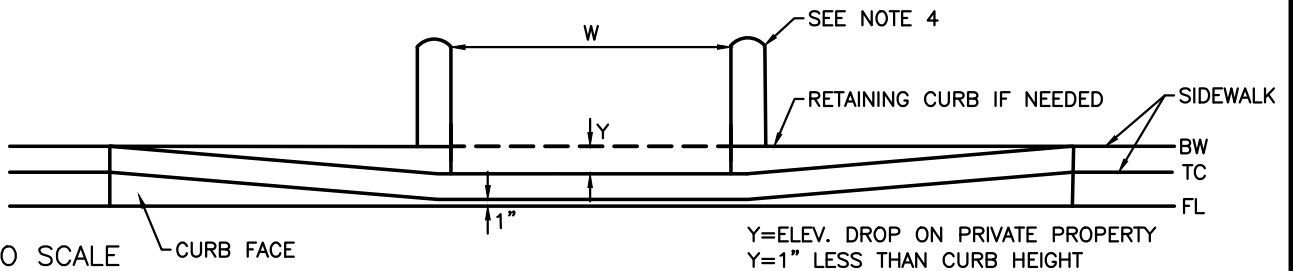
STANDARD PLAN  
**PV 693**  
1 OF 2

## CASE 2 - PLAN VIEW

SEE THE TABLE ON PAGE 1 OF 2 FOR APPROPRIATE CASE



## CASE 2 - ELEVATION

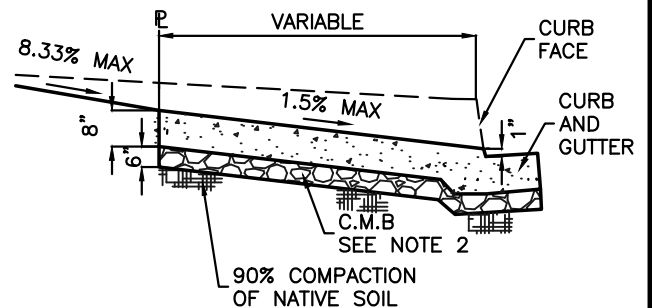


NOT TO SCALE

### NOTES:

1. USE CLASS 520-C-2500 CEMENT CONCRETE.
2. DRIVEWAY APRON SHALL BE POURED MONOLITHICALLY WITH CURB AND GUTTER. 6" OF C.M.B SHALL BE PLACED UNDER THE DRIVEWAY, CURB AND GUTTER.
3. ADJACENT SIDEWALKS 5' ON EITHER END OF DRIVEWAY SHALL BE POURED 8" THICK
4. 10" DIA. PIPE BARRIER MIN. SCHEDULE 30 PER CITY STD. V2122 SHALL BE INSTALLED AS NEEDED TO PROTECT IMPROVEMENTS.
- ALL CONCRETE SHALL BE ONE COURSE, STEEL TROWEL & MEDIUM HAIR BROOM FINISH. NO TOPPING PERMITTED.
6. DRIVEWAYS MAY BE OPENED TO TRAFFIC:
  - A. IN 48 HOURS WITH HIGH STRENGTH CEMENT
  - B. IN 5 DAYS WITH STANDARD CLASS 520-C-2500 MIX.
7. ENDS OF DRIVEWAYS TO BE NOT LESS THAN 5' FROM NEAREST FIRE HYDRANT, METER BOX OR VALVE AND 12' FROM UTILITY POLE.
8. 1/4" EXPANSION JOINT FELT SHALL BE PLACED ALONG THE TX.
9. DRIVEWAY ENTRANCE WIDTH (W) SHALL BE:
  - A. 25' MIN FOR NON-TRUCK USE.
  - B. 40' MIN FOR TRUCK USE.
10. 30" CONCRETE OR MASONRY WALL PER STD. V2122 OR VARIABLE HEIGHT CURB IF WROUGHT IRON FENCE OR LANDSCAPING IS INSTALLED.

## CASE 2 - SECTION AA



REVISIONS		
DATE	DESCRIPTION	INITIALS
8/15	MODIFIED CASE #1 & CASE#2 DRIVEWAY	BM
2/16	MODIFIED CASE #1 & CASE#2 DRIVEWAY	FS
7/18	UPDATED	MB

## STANDARD DRIVEWAY

CITY OF VERNON, PUBLIC WORKS DEPARTMENT  
JULY 2018

STANDARD PLAN

PV 693

2 OF 2