

Length of Curb Opening	No. of Anchors
3'-6" or less	2
7'-0"	3
10'-0"	4
14'-0"	5
21'-0"	7

EYEBOLT AND ALTERNATE ANCHOR DETAIL FOR FACE PLATE

COUNTY OF ORANGE, OC PUBLIC WORKS DEPARTMENT

Approved 
 Ignacio G. Ochoa, Chief Engineer

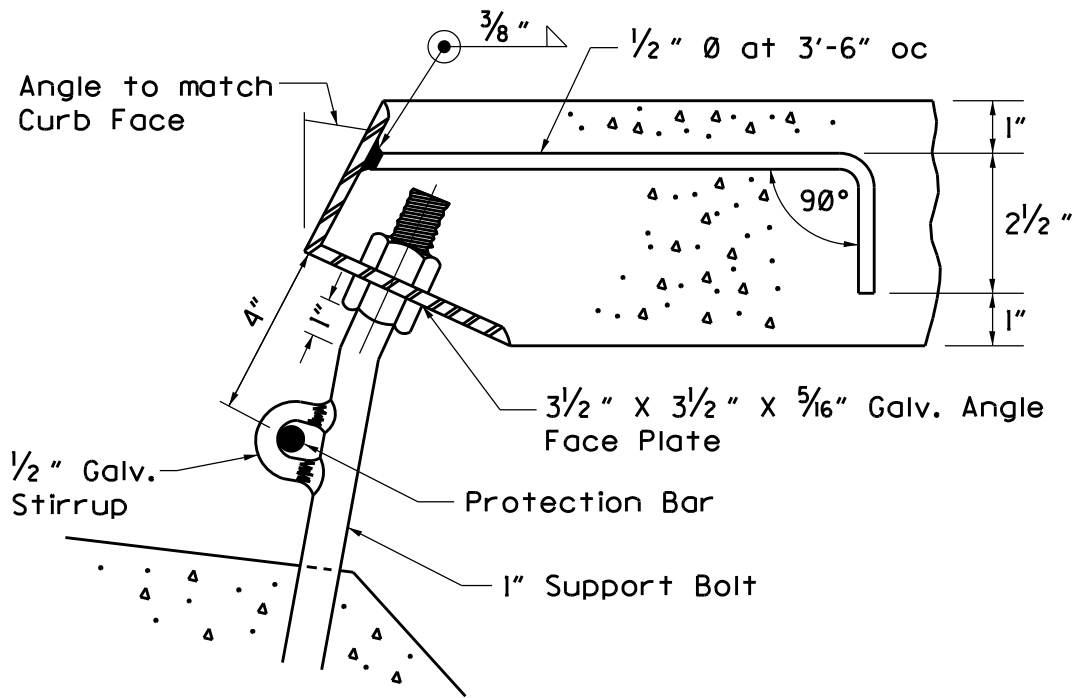
Revision: April 2013

STD. PLAN

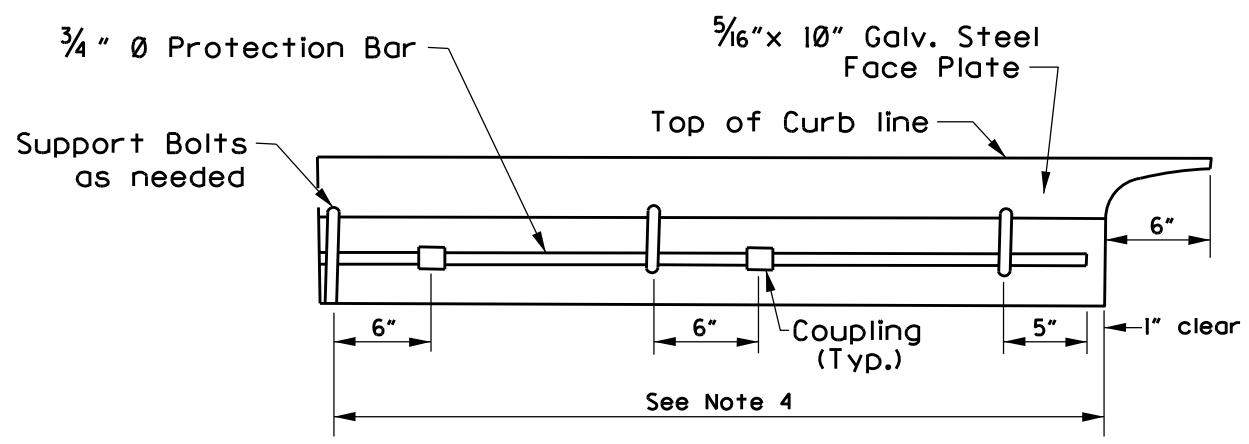
1306

MISCELLANEOUS CURB INLET DETAILS AND NOTES

SHT. 1 OF 3



DETAIL A



PROTECTION BAR DETAIL

COUNTY OF ORANGE, OC PUBLIC WORKS DEPARTMENT

Approved 
Ignacio G. Ochoa, Chief Engineer

Revision: April 2013

STD. PLAN

1306

MISCELLANEOUS CURB INLET DETAILS AND NOTES

SHT. 2 OF 3

NOTES:

1. One eyebolt shall be placed 12 inches from each end of face plate.
2. Eyebolts shall be symmetrically spaced in the curb opening so that the unsupported span is not more than 4 feet; support bolts, when used, should be considered as eyebolts in the spacing.
3. One coupling shall be placed 6 inches to the right or left of each eyebolt with the exception of the last eyebolt. Couplings shall be threaded to facilitate removal of protection bar.
4. Galvanized steel support bolts shall be installed when length of curb opening exceeds 7-feet and shall be spaced at not more than 7 feet on-center and not less than 5 feet on-center.
5. Face plate anchors shall be uniformly spaced not to exceed 4 feet between centers and shall be placed $4\frac{1}{2}$ inches from each end of the face plate. An anchor shall be placed over each W-beam in a grating inlet.
6. A coupling may be omitted provided the protection bar is removable after installation.
7. All metal shall be galvanized after fabrication.
8. Support bolts, eyebolts, and anchors may be attached by a full penetration butt weld as an alternate.
9. Place a $\frac{3}{4}$ -inch dia. protection bar horizontally across the entire length of the curb opening.
10. See Std. Plan 1307 for additional miscellaneous inlet details and notes.
11. Curb section shall match adjacent curb type.
12. Curb opening shall conform to curb alignment.
13. Height of curb opening will vary with the type of curb and the depth of the local depression (Std. Plan 1308).
14. The angle as shown on detail A shall be allowed only when on approved plans.

COUNTY OF ORANGE, OC PUBLIC WORKS DEPARTMENT

Approved


Ignacio G. Ochoa, Chief Engineer

Revision: April 2013

STD. PLAN

1306

MISCELLANEOUS CURB INLET DETAILS AND NOTES

SHT. 3 OF 3